



Republic of the Philippines
OFFICE OF THE SECRETARY
Elliptical Road, Diliman
1100 Quezon City

DEPARTMENT ORDER

No. 06

Series of 2023

SUBJECT : IMPLEMENTING GUIDELINES OF THE SPECIAL AREA FOR AGRICULTURAL DEVELOPMENT (SAAD) PROGRAM PHASE 2 FOR FY 2023 – 2028

I. Introduction

The Special Area for Agricultural Development (SAAD) Program Phase 2 is a locally-funded project that provides agricultural and fisheries interventions related to rice, corn, high-value crops, livestock, poultry, capture fisheries, aquaculture, and postharvest prioritizing the poorest and most remote areas of the country that have not received support from DA/BFAR regular programs.

SAAD Phase 2 is developmental in nature and envisions to uplift its beneficiaries above the poverty line by providing them access to economic opportunities thus, improving their agricultural and fisheries activities and further transforming them into successful community-based enterprises (CBEs).

SAAD Phase 2 is reform-oriented since it is one of the major programs of the Department of Agriculture (DA) that provides social protection to the farmers and fisherfolk thus contributing to the reduction in poverty thru policy formulation, project documentation and livelihood provision. It is developmental and transformative in-nature where it aims to make the beneficiaries from farmer/fisherfolk producers to entrepreneurs.

It is designed to contribute to poverty incidence reduction in its covered areas thru its four (4) core components: a. Social Preparation, b. Food Production and Livelihood, c. Marketing Assistance and Enterprise Development, & d. Program Management. In addition, it improves the services delivered and enhances the performance of DA by serving and preparing beneficiaries not covered by its Regular Programs.

The SAAD Phase 2 aims to complement with the DA and BFAR Programs thru the “Small brother – Big Brother” concept where SAAD serves as the Small Brother that prepares beneficiaries to be productive, sustainable and attain requirements set by the other DA Programs. Once the beneficiaries achieve the program’s target sustainability, it shall then be endorsed to be recipients of the DA Regular Programs (Big Brother).

The difference of Phase 2 to Phase 1 primarily is on the covered areas. For SAAD Phase 1, the program covers 30 priority provinces (with 457 municipalities) based on PSA 2012 & 2015 Poverty Incidence among Families and Island Equity scheme. For Phase 2, the program shall cover 619 municipalities (in 66 Provinces). These municipalities are based on the 5th and 6th income class municipalities and top 1/3 poorest municipalities based on PSA Poverty Incidence 2018 full report (less BARMM).



The purpose of this guidelines is to provide direction on the totality of the Phase 2 implementation. It also highlights the importance and correlation of the program's four (4) components focusing on its contribution to the achievement of its objectives. SAAD Phase 2 is implemented to continue the Department's efforts to contribute in the poverty reduction of farmers and fisherfolks in the country by providing appropriate agriculture and fishery assistance in the form of livelihood packages.

II. Objectives

The SAAD Program Phase 2 aims to contribute in the reduction of poverty through the provision of agricultural and fishery interventions to the poor farming and fishing sectors.

Specifically, it aims to:

- Improve food production, household consumption and commercial purpose in areas of operation;
- Complement the DA banner programs in terms of beneficiaries and interventions; and
- Assist the beneficiaries in establishing community-based agriculture and fishery enterprises.

III. Program Framework – refer to Annex A

The program framework shall serve as the basis on the establishment of baselines and targets, overseeing progress and measuring success towards the achievement of its goal.

IV. Program Components

In line with Phase 1, these components are used to help develop its target beneficiaries from beneficiary producer to entrepreneurs.

The four (4) core components of SAAD Phase 2 are defined as follows:

1. **Social Preparation** – refers to series of activities that helps identify the basic and complex needs of its target beneficiaries that shall serve as the baseline for the beneficiaries' social and economic improvement relative to agriculture and fisheries. These activities encompass various needs assessment, profiling and capacity building activities.
2. **Food Production and Livelihood** – refers to agriculture and fishery goods and services provided to its beneficiaries packaged into a transformative livelihood project that allows the beneficiaries to develop into entrepreneurs.



3. **Marketing Assistance and Enterprise Development** – refers to market related activities that assist and support the provided livelihood projects develop into enterprises to sustain source of income and improve socio-economic status of its covered beneficiaries.
4. **Program Management** – refers to activities (both goods and services) procured, conducted and/or utilized by the program implementers in order to deliver quality and timely goods and services for its target beneficiaries.

The four (4) core components are categorized in terms of its end users/beneficiaries. External refers to goods and services provided to its target beneficiaries while internal refers to goods and services utilized by the implementers to facilitate external activities. These components are categorized as follows:

External:

- a. Social Preparation
- b. Food Production and Livelihood
- c. Marketing Assistance and Enterprise Development

Internal:

- a. Program Management

V. Activities

Each component has its major activities that shall be the basis for its implementation. These components are interconnected including its activities conducted.

Component	Sub-Component	Activities	Description
Social Preparation	Community Needs Assessment	Beneficiary Needs Assessment (BNA)	Identification and evaluation of Beneficiaries' basic needs in terms of agriculture and fishery related activities
		Participatory Rural Appraisal (PRA)	Identification and evaluation of Beneficiary and community needs in a systematic and wholistic approach
	Profiling and Geotagging	Beneficiary Profiling	Basic socio-economic information shall be sourced from RSBSA/ FishR
		Project Tagging	Tagging of projects implemented per beneficiary recipient
	Capacity Building	Organizational Development	Includes financial literacy, project and policy formulation/development



		Leadership Training	Role identification, complementation and supplementation
		Advocacy, networking and linkaging	Includes interpersonal skills development
	Capacity Development	Social Mobilization	Creation of Community-based Project Management Group composed of Beneficiary-leaders
Food Production and Livelihood	Livelihood Project	Livelihood Project delivery	Provision of Package of interventions
	Specialized/ Technical Training	Commodity Specific trainings	Provision of training related to the provided package of intervention
Marketing Assistance and Enterprise Development	Market Identification	Market Scanning	Market assessment vis-à-vis the projected enterprise to be established
	Enterprise Development Trainings	Enterprise related trainings	Provision of appropriate enterprise related training
	Market Linkages	Partnerships	Creation of linkage with public-private partnerships to support enterprise growth
Program Management	PMO Establishment	Hiring of Manpower	Placement of SAAD manpower based on organizational structure
		Capacity Building	Provision of appropriate training for hired PMO staff
	PMO Development	Policy Formulation	Crafting of policy related documents for the implementation of the program
		Capacity Development	Provision of appropriate systems and training to enhance PMO capacity to implement the program

VI. Indicators

Based on its components, the program identified indicators that would represent the measurability of success and failure of its project implementation. As such, the following are the major indicators used for planning, budgeting and M&E purposes:

Component	Indicator	Description
Social Preparation	Social Preparation activities conducted	Number of community needs assessment and capacity building activities conducted



Food Production and Livelihood	Livelihood Projects implemented	Livelihood projects provided to its target beneficiaries whether it is partially or fully delivered
Food Production and Livelihood	Specialized Training conducted	Technical training related to the type of projects provided in terms of commodity and nature of implementation (e.g., Rice Production)
Marketing Assistance and Enterprise Development	Fully established Community-based Enterprise	CBEs that are fully functional, can stand alone and do not need further hard interventions from SAAD. Functional refers to conducting marketing activities and is already income generating.
Marketing Assistance and Enterprise Development	Partially established Community-based Enterprise	CBEs that are functional but requires further assistance from SAAD to sustain its operations
Program Management	Program Management Office established	Established and functional organizational structure

VII. Coverage and Beneficiary Eligibility

The program identifies its target beneficiaries thru long listing and short listing. Long listing means that the selection of beneficiaries shall be based on target areas identified by the program in relation to poverty incidence. On the other hand, short listing shall be based on qualifications of possible beneficiaries.

A. Coverage – refer to Annex B

Long list shall be based on two (2) references:

1. Top 1/3 poorest municipalities based on PSA 2018 Poverty Incidence report and;
2. Income classification under 5th and 6th class municipalities (DOF Order No. 23-08)

Since BARMM is not directly under the Department of Agriculture, coverage of SAAD shall exclude municipalities from BARMM listed in the 2 coverage criteria.

Additional References

Upon municipal identification, the following may also be used as additional references for the selection of barangays:

1. Poverty statistics based on the Philippine Statistics Authority data (e.g. latest FIES and SAE)



Republic of the Philippines
OFFICE OF THE SECRETARY
Elliptical Road, Diliman
1100 Quezon City

2. Vulnerability of poor municipalities/barangays to natural hazards (drought and flood prone areas, typhoon belt, etc.) from LGU MDRRMO and BDRRMO.
3. Rainfed and coastal areas
4. Latest DILG issuances on high-risk areas relative to peace and order (ELCAC barangays)
5. National Nutrition Council (NNC) List of areas with high malnutrition incidence
6. Community-based Monitoring System (CBMS) data

B. Beneficiary Eligibility

For the short listing, the following criteria shall be referred in selecting beneficiaries from the long-listed areas:

1. **Group selection** – this means that the selected beneficiaries must be a formal group. Formal group refers to group registered at least under DOLE.

Likewise, the program may still cover individual beneficiaries but must be organized and formed into a formal group thru Social Preparation before receiving livelihood projects.

2. **Equal or Below Poverty Threshold** – within the eligible formal group beneficiaries, only members that are documented as equal or below the poverty threshold of their corresponding municipality may be eligible from the program implementation. This means that their individual income must be equal or below the suggested poverty threshold income in their corresponding areas.
3. **Non-banner recipient** – In the provision of livelihood projects, qualified beneficiaries may receive interventions from SAAD and other DA/BFAR Banner Programs that are not overlapping for at least 2 years. This means that interventions provided by SAAD may complement but not overlap the provided interventions of the Banner Program unless it was provided to the beneficiary at least two (2) years prior to its receipt from SAAD.
4. **DA Registration/Accreditation** – in compliance with the Department of Agriculture efforts in harmonizing farmer and fisherfolk registries, all identified beneficiaries must be included in the RSBSA prior to their project receipt. This means that qualified formal groups must assure that their members to receive from SAAD are RSBSA registered. In the cases that the qualified beneficiaries are non-RSBSA registered, the SAAD and RSBSA will assist these beneficiaries to assure their registration. For BFAR, the FishR shall be used as the official registration for qualified fisherfolk group members.

SAAD Phase 2 shall assist its beneficiaries to be accredited as Civil Society Organization (CSO) at the regional level.



C. Area Expansion

From 2024 onwards, the SAAD Phase 2 may cover additional municipalities as qualified on its long list and as proposed by the RPMSO. However, such expansion would require the following:

1. At least 90% of group beneficiaries have undergone Social Preparation thru Beneficiary Needs Assessment (BNA) or Participatory Rural Appraisal (PRA).
2. At least 90% of the group beneficiaries covered have fully received package of interventions before the 2nd year of implementation.
3. At least 50% of covered group beneficiaries are transitioning to processing/marketing on the target year of expansion. This means that the proposed projects must exclude production related interventions and must only focus on processing/marketing related aspects.

These above-mentioned requirements shall be evaluated and approved by the SAAD NPMO during the planning & budget proposal stages.

VIII. Mechanics of Implementation

The implementation process of the program revolves mainly on its components. However, there are other functions required within and outside these components that shall be the basis for the implementation process of the program. These shall be based on the following:

A. Organizational Structure

The organizational structure shall be based on the establishment of the Program Management Offices from the National, Regional and Provincial levels covered under SAAD Phase 2. These are defined as follows:

1. **National Program Management Office (NPMO)** – it is the lead PMO responsible on the overall direction setting, policy formulation, planning, budget and M&E activities of the program.

For the SAAD Fisheries, there shall be a BFAR National Program Management Support Office (NPMSO) that will serve as a support office for the DA NPMO which shall oversee the planning and implementation of all SAAD fishery related projects and activities.

2. **Regional Program Management Support Office (RPMSO)** – it is the PMO responsible to facilitate implementation on concerned provinces & municipalities covered by the program. It shall be the procuring entity of the



program relative to all planned internal and external activities both tangible and intangible.

3. **Provincial Program Management Support Office (PPMSO)** – it is the PMO responsible to assist the RPMSO in its implementation and assure that the intended goods and services are delivered to its target beneficiaries.

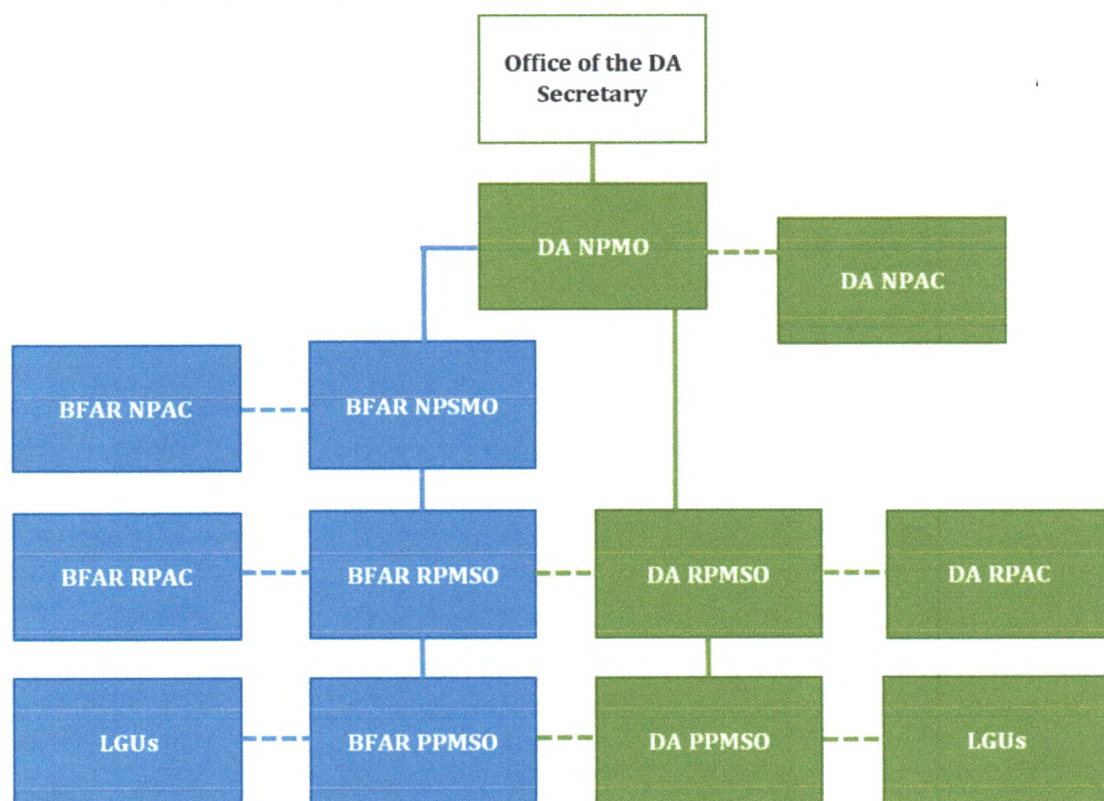


Figure 1. SAAD Phase 2 General Organizational Structure

Details of the organizational structure per PMO, specific functions & manpower requirement may be referred in the SAAD Phase 2 HR Manual and Department Orders on Operational Linkage and Collaboration & Advisory Committee.

B. Process Flow

In order to facilitate the implementation of the program, a process flow shall serve as a reference on the transitioning of various activities that relates to the core components of the program vis-à-vis the attainment of its objectives.



Republic of the Philippines
OFFICE OF THE SECRETARY
 Elliptical Road, Diliman
 1100 Quezon City

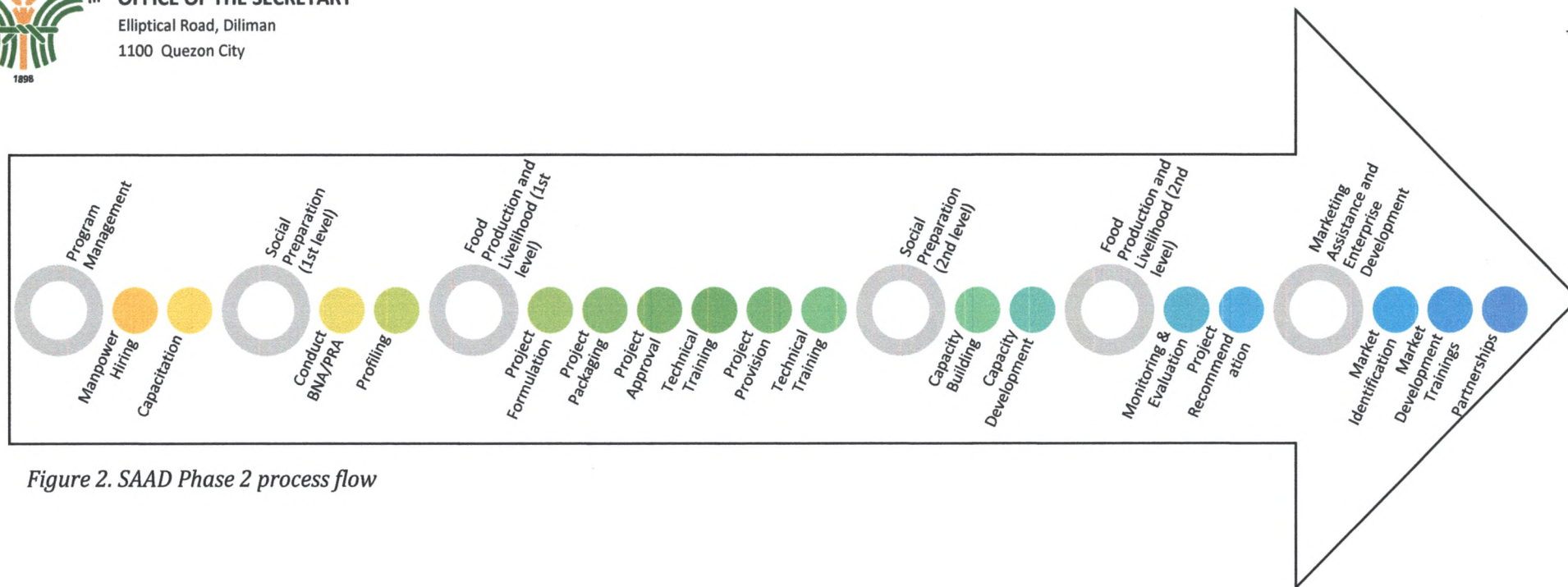


Figure 2. SAAD Phase 2 process flow

This process flow shall serve as a guide in the sequencing of activities from Program Management to Enterprise Development including major activities conducted. Support activities needed shall be encompassed within corresponding major activities.

Activities on the part of Social Preparation (levels 1 & 2) and Food Production & Livelihood (levels 1 & 2) may interchange or overlap. These adjustments shall be based on the following:

1. Project Technicalities – cropping calendar, climate considerations, adaptability, technical suitability and the like
2. Administrative concerns – government planning & budget cycle, delays in procurement, change in direction and/or management and the like



C. Project Inclusion and Exclusion

For SAAD Phase 2 beneficiaries, the three (3) external Components as cited in the component section of the SAAD Phase 2 shall serve as the basis of project interventions, both goods and services. As such, the following are the possible interventions that shall constitute SAAD Phase 2 activities and project deliveries:

Social Preparation Activities

1. Community Needs Assessment
2. Profiling & Geotagging of Beneficiaries
3. Capacity Building & Capacity Development

Food Production and Livelihood Activities

1. Rice Related Livelihood Projects

- ✓ Provision of Rice Seeds (Upland and Inbred)
- ✓ Provision of supplemental agri inputs (e.g., fertilizers, soil ameliorants, farm tools, etc.)
- ✓ Provision of small Production and Post-harvest related Rice Farm Machinery, Equipment and Facilities
- ✓ Specialized Training
- ✓ Marketing-related assistance/ Community-based Enterprise development

2. Corn Related Livelihood Projects

- ✓ Provision of Corn Seeds
- ✓ Provision of supplemental agri inputs (e.g., fertilizers, soil ameliorants, farm tools, etc.)
- ✓ Provision of small Production and Post-harvest related Corn Farm Machinery, Equipment and Facilities
- ✓ Specialized Training
- ✓ Marketing-related assistance/ Community-based Enterprise development

3. High Value Crop Related Livelihood Projects

- ✓ Provision of High Value Crop Seeds/Planting Materials (e.g., vegetable seeds, fruit trees planting materials, industrial crops, root crops, etc.)
- ✓ Provision of supplemental agri inputs (e.g., fertilizers, soil ameliorants, farm tools, etc.)
- ✓ Provision of small Production and Post-harvest related HVC Farm Machinery, Equipment and Facilities
- ✓ Specialized Training
- ✓ Marketing-related assistance/Community-based Enterprise development

4. Livestock and Poultry Related Livelihood Projects

- ✓ Provision of Small ruminants, Large Ruminants and Poultry animals
- ✓ Provision of supplemental livestock & poultry inputs (e.g., feeds, feed inputs/source, biologics, etc.)



Republic of the Philippines
OFFICE OF THE SECRETARY
Elliptical Road, Diliman
1100 Quezon City

- ✓ Provision of small Production and Post-harvest related Livestock and Poultry Farm Machinery, Equipment and Facilities
- ✓ Specialized Training
- ✓ Marketing-related assistance/ Community-based Enterprise development

5. Aquaculture Fishery Related Livelihood Projects

- ✓ Fingerling distribution
- ✓ Fishing Gears and paraphernalia
- ✓ Technology demonstration
- ✓ Cages for livelihood
- ✓ Postharvest equipment
- ✓ Marketing Assistance/ Community-based Enterprise development
- ✓ Specialized Training
- ✓ Seaweed Development
- ✓ Village-level Hatchery
- ✓ Nursery/Garungan Production

6. Capture Fishery Related Livelihood Projects

- ✓ Fishing Gears and paraphernalia
- ✓ Technology demonstration
- ✓ Provision of Payao
- ✓ Postharvest equipment
- ✓ Marketing Assistance/ Community-based Enterprise development
- ✓ Specialized Training

SAAD Phase 2 also allows diversification of crops, livestock and fisheries and provides integrated livelihood projects with crops, livestock and fishery production and postharvest-related projects based on the needs of its beneficiaries and approved based on its feasibility supported by the BNA/PRA results.

On the other hand, the **NEGATIVE LIST** for the SAAD Phase 2 implementation includes:

1. Farm-to-Market Roads (FMRs) – refers to any road network (e.g. gravel, concrete, etc.)
2. National and Communal Irrigation System – refers to irrigation systems facilitated by the National Irrigation Administration (NIA)
3. Regulatory related services – refers to any regulatory services, inputs and activities. (e.g. Laboratory equipment etc.)
4. Training Centers – refers to any structure establishment that shall be used for training and training related activities.
5. Multiple types of Livestock per project – refers to different types of livestock and/or poultry packaged in one (1) livelihood project in a single year to be received by one (1) group beneficiary.
6. Large Production and post-harvest machineries, equipment & facilities (Php2million and above per unit worth of PAEF)



Republic of the Philippines
OFFICE OF THE SECRETARY
Elliptical Road, Diliman
1100 Quezon City

IX. Duration

The SAAD Phase 2 shall be implemented from FY 2023 – 2028. If funds shall allow, an extension in 2029 shall be used to conduct an Impact Evaluation and transition activities.

X. Funding

As a locally funded project, the fund source for the program shall come from the General Appropriations Act (GAA).

XI. Monitoring and Evaluation

The SAAD Phase 2 shall use M&E tools and activities provided by SAAD to triangulate the effects of its implementation to its covered beneficiaries. This triangulation approach shall be used as the outline of its formulated M&E activities and shall be guided by the following:

A. Report Generation

The program shall use M&E report forms/templates provided by the NPMO as guided by DA operating units or as formulated by the SAAD NPMO based on its needs. In addition, the RPMSO may include their report forms/templates as additional basis for the regional M&E.

B. Site Validation

Both NPMO and RPMSO shall conduct M&E activities with physical area validation on the declared project sites. This shall serve as a basis to validate M&E and other relevant reports on the project implementation.

C. Feedbacking

All reports generated which includes both technical and administrative concerns will be raised, discussed and addressed by the concerned SAAD PMOs. This will serve as a venue to discuss the results of the M&E activities conducted in the office and ground level. In addition, the feedbacking will be the source of recommendations that will be used for policy and policy-related activities of the NPMO.

XII. Supplemental Guidelines

Supplemental issuances shall only come from the NPMO to clarify, repeal and/or supersede the existing SAAD Phase 2 implementing guidelines.

XIII. Phase 1 Transition

For the Phase 1 beneficiary transition, it shall be based on the following:



Republic of the Philippines
OFFICE OF THE SECRETARY
Elliptical Road, Diliman
1100 Quezon City

A. With Partially Established CBEs

The NPMO shall consolidate the final list of Phase 1 group beneficiaries with partially established CBEs as submitted by the RPMSOs. These Phase 1 group beneficiaries may not all come from the Phase 2 identified municipalities.

For 2023, this list shall be the basis of the SAAD RPMSOs to provide additional assistance relative to the full establishment of their target CBEs. However, provision of additional assistance shall be based on the availability of FY 2023 SAAD RPMSO funds.

This transition period will only cover FY 2023.

B. For Other Phase 1 Group Beneficiaries

Phase 1 group beneficiaries that were not classified with partially established CBEs may still qualify in the Phase 2 provided that they are covered within the Phase 2 identified municipalities and are in line with the beneficiary criteria of SAAD Phase 2 as stated in Section 7 of this guidelines.

However, these Phase 1 group beneficiaries must be evaluated by the RPMSO in terms of project management prior to their reselection as SAAD Phase 2 group beneficiaries (e.g. calamity affected projects in Phase 1).

Further, these beneficiaries must undergo all processes involved in the SAAD Phase 2 from Social Preparation to Marketing Assistance and Enterprise Development and achieve CBE establishment within the project timeline.

Assistance to these qualified group beneficiaries shall cover FY 2023 onwards subject to availability of funds.

For all Phase 1 RPMSOs, a transition plan must be provided to the NPMO for its covered Phase 1 beneficiaries.

XIV. Effectivity

This order including all its annexes and attachments shall take effect immediately upon approval.

Done this 14th day of February 2023.

DOMINGO F. PANGANIBAN
DA Senior Undersecretary



DA-CO-FOS-DO20230207-00002



Republic of the Philippines
OFFICE OF THE SECRETARY
 Elliptical Road, Diliman
 1100 Quezon City

ANNEX A

SAAD PHASE 2 RBME FRAMEWORK

RBME		OBJECTIVES	INDICATOR	VERIFICATION	ASSUMPTIONS (both for agriculture and fisheries)
Goal*		To contribute in the reduction of poverty incidence of SAAD beneficiaries in the covered areas	% of SAAD areas with operational CBEs that decreased poverty incidence % of SAAD beneficiaries with operational CBEs that was lifted from the poverty threshold	NEDA Reports, PSA Reports, Commissioned Agency reports	CBE Beneficiaries are able to address other basic needs including non-agriculture activities
Outcome	Long Term	Improved SAAD CBE members access to food with increase in household food consumption and commercial purpose in areas of operation.	100% beneficiaries that established and expanded CBEs have increased basic food access and household farm incomes	SAAD M&E Reports	CBEs are still operational and increased scale of production
	Intermediate	Agriculture or fishery CBEs are profitable and for expansion	At least 50% of the total agriculture or fishery enterprises retained after a year of establishment are for expansion	SAAD M&E Reports	inputs used to produce raw materials are available and accessible volume of production increased market demand increased or expanded profit from CBEs are available for expansion
	Immediate	Agriculture or fishery CBEs are established and operational	At least 70% of the total agriculture or fishery CBEs supported by the program are self-sustaining a year after full establishment	SAAD M&E Reports	production of inputs/raw materials for enterprise are sustainable
			At least 50% of CBEs established are officially registered after a year from establishment	DTI registration, DA-AMAS registration	beneficiaries are capacitated in market-related activities
		Livelihood projects for agriculture and fisheries in target areas are established and operational.	At least 90% of livelihood projects are established and fully operational from receipt	M&E Reports (RBMERA report)	beneficiaries adopted technologies and practices provided
Output		Marketing Assistance and Enterprise Development implemented and established	At least 95% market studies conducted	M&E reports (BAR 1, Audit reports, Regional M&E report, Market-related reports)	available markets and stakeholders in relation to projects implemented are identified
			At least 95% market-related training conducted		
			At least 95% Partnerships established		
		Food Production and Livelihood implemented	At least 95% of target Livelihood Projects implemented	M&E reports (BAR 1, FUR, RBMERA, Regional M&E report)	minimal calamities have stricken SAAD communities and procurement delays are minimized
At least 95% of target technical/specialized training conducted					



Republic of the Philippines
OFFICE OF THE SECRETARY
 Elliptical Road, Diliman
 1100 Quezon City

ANNEX A

	Social Preparation conducted	100% target capability building activities implemented	M&E reports (BAR 1, FUR, Audit reports, Regional M&E report, BNA Reports, PRA Reports)	PMO manpower are well capacitated in capability building activities
	Program Management established	100% PMO established and operational	M&E reports (Audit reports, Regional M&E report)	guidelines for human resource is approved and implemented
Activities*	Procurement documents processed and approved	Purchase requests generated and facilitated	Regional M&E Reports	office supplies used in document processing are available
	Manpower hired and capacitated	Required number of manpower hired and trained	Regional M&E Reports	qualified manpower are available
	Policy Guidelines disseminated	Implementing guidelines crafted and disseminated	Regional M&E Reports	meetings and consultations are conducted
	Profiling and databasing conducted	Beneficiary Profiles uploaded	RSBSA & SAAD IT data	required manpower and travelling expenses are met
	Community Needs Assessment conducted	PRA/BNA reports generated	Regional M&E Reports	capacitated manpower in BNA/PRA are achieved
	IEC materials disseminated	Reports and publications crafted and disseminated	Regional M&E Reports	Necessary data are gathered and processed
Inputs	Fund Allocation	Approval of budget proposal	GAA	Total requested budget is approved
	Interventions	Availability and accessibility of interventions to be procured	GAA	No delays in procurement process
	Supplies	Availability of supplies utilized in the PMO	APP/PPMP	Available, sufficient and accessible office supplies
	Manpower requirement	Availability and sufficiency of manpower	APP/PPMP	Available manpower based on org structure requirement

**Targets shall be based on the annual targets of the program as identified by the National Program Management Office and Regional Program Management Support Offices*



List of SAAD Areas based on 5th and 6th Income Classification (Municipality)

Region	Provinces	Municipalities	Classification
CAR	Abra	Bucloc	6th
CAR	Abra	Penarrubia	6th
CAR	Abra	Baay-Licuan	5th
CAR	Abra	Boliney	5th
CAR	Abra	Bucay	5th
CAR	Abra	Daguio	5th
CAR	Abra	Danglas	5th
CAR	Abra	Dolores	5th
CAR	Abra	La Paz	5th
CAR	Abra	Lacub	5th
CAR	Abra	Lagangilang	5th
CAR	Abra	Lagayan	5th
CAR	Abra	Langiden	5th
CAR	Abra	Luba	5th
CAR	Abra	Malibcong	5th
CAR	Abra	Manabo	5th
CAR	Abra	Pidigan	5th
CAR	Abra	Pilar	5th
CAR	Abra	Sallapadan	5th
CAR	Abra	San Isidro	5th
CAR	Abra	San Juan	5th
CAR	Abra	San Quintin	5th
CAR	Abra	Tayum	5th
CAR	Abra	Villaviciosa	5th
CAR	Benguet	Sablan	5th
CAR	Benguet	Tublay	5th
CAR	Ifugao	Asipulo	5th
CAR	Ifugao	Hingyon	5th
CAR	Kalinga	Pasil	5th
CAR	Mountain Province	Barlig	5th
CAR	Mountain Province	Besao	5th
CAR	Mountain Province	Sabangan	5th
CAR	Mountain Province	Sadanga	5th
CAR	Mountain Province	Sagada	5th



Republic of the Philippines
OFFICE OF THE SECRETARY
 Elliptical Road, Diliman
 1100 Quezon City

ANNEX B

Region	Provinces	Municipalities	Classification
Region 1	Ilocos Norte	Adams	5th
Region 1	Ilocos Norte	Burgos	5th
Region 1	Ilocos Norte	Carasi	5th
Region 1	Ilocos Norte	Dumalneg	5th
Region 1	Ilocos Sur	G. Del Pilar	5th
Region 1	Ilocos Sur	Lidlidda	5th
Region 1	Ilocos Sur	Nagbukel	5th
Region 1	Ilocos Sur	San Esteban	5th
Region 1	Ilocos Sur	San Ildefonso	5th
Region 1	Ilocos Sur	San Vicente	5th
Region 1	Ilocos Sur	Santa Catalina	5th
Region 1	Ilocos Sur	Sigay	5th
Region 1	Ilocos Sur	Sugpon	5th
Region 1	La Union	Bagulin	5th
Region 1	La Union	Burgos	5th
Region 1	La Union	Pugo	5th
Region 1	Pangasinan	Sto. Tomas	5th
Region 2	Batanes	Ivana	6th
Region 2	Batanes	Mahatao	6th
Region 2	Batanes	Sabtang	6th
Region 2	Batanes	Uyugan	6th
Region 2	Batanes	Basco	5th
Region 2	Batanes	Itbayat	5th
Region 2	Cagayan	Rizal	5th
Region 2	Cagayan	Sta. Praxedes	5th
Region 2	Isabela	Luna	5th
Region 2	Isabela	San Isidro	5th
Region 2	Nueva Vizcaya	Ambaguio	5th
Region 2	Nueva Vizcaya	Villaverde	5th
Region 2	Quirino	Saguday	5th
Region 3	Nueva Ecija	Nampicuan	5th
Region 3	Tarlac	Anao	5th
Region 3	Tarlac	Ramos	5th
Region 3	Tarlac	San Clemente	5th
Region 4-A	Batangas	Balete	5th
Region 4-A	Batangas	San Nicolas	5th



Republic of the Philippines
OFFICE OF THE SECRETARY
 Elliptical Road, Diliman
 1100 Quezon City

ANNEX B

Region	Provinces	Municipalities	Classification
Region 4-A	Batangas	Sta. Teresita	5th
Region 4-A	Batangas	Tingloy	5th
Region 4-A	Cavite	Gen. E. Aguinaldo	5th
Region 4-A	Laguna	Famy	5th
Region 4-A	Laguna	Mabitac	5th
Region 4-A	Laguna	Pakil	5th
Region 4-A	Laguna	Rizal	5th
Region 4-A	Quezon	Agdangan	5th
Region 4-A	Quezon	Alabat	5th
Region 4-A	Quezon	Jomalig	5th
Region 4-A	Quezon	Patnanungan	5th
Region 4-A	Quezon	Perez	5th
Region 4-A	Quezon	Plaridel	5th
Region 4-A	Quezon	Quezon	5th
Region 4-A	Quezon	Sampaloc	5th
Region 4-B	Occidental Mindoro	Looc	5th
Region 4-B	Palawan	Cagayancillo	6th
Region 4-B	Palawan	Agutaya	5th
Region 4-B	Palawan	Kalayaan	5th
Region 4-B	Palawan	Linapacan	5th
Region 4-B	Palawan	Magsaysay	5th
Region 4-B	Romblon	Concepcion	6th
Region 4-B	Romblon	Ferrol	6th
Region 4-B	Romblon	Alcantara	5th
Region 4-B	Romblon	Banton	5th
Region 4-B	Romblon	Calatrava	5th
Region 4-B	Romblon	Corcuera	5th
Region 4-B	Romblon	Magdiwang	5th
Region 4-B	Romblon	San Andres	5th
Region 4-B	Romblon	San Jose	5th
Region 4-B	Romblon	Sta. Fe	5th
Region 4-B	Romblon	Sta. Maria	5th
Region 5	Camarines Norte	San Lorenzo Ruiz	5th
Region 5	Camarines Norte	San Vicente	5th
Region 5	Camarines Sur	Bombon	5th
Region 5	Camarines Sur	Cabusao	5th



Republic of the Philippines
OFFICE OF THE SECRETARY
 Elliptical Road, Diliman
 1100 Quezon City

ANNEX B

Region	Provinces	Municipalities	Classification
Region 5	Camarines Sur	Camaligan	5th
Region 5	Camarines Sur	Gainza	5th
Region 5	Catanduanes	Bagamanoc	5th
Region 5	Catanduanes	Baras	5th
Region 5	Catanduanes	Bato	5th
Region 5	Catanduanes	Gigmoto	5th
Region 5	Catanduanes	Panganiban	5th
Region 5	Catanduanes	San Miguel	5th
Region 5	Masbate	San Fernando	5th*
Region 5	Masbate	Batuan	5th
Region 5	Masbate	Esperanza	5th
Region 5	Sorsogon	Barcelona	5th
Region 5	Sorsogon	Prieto Diaz	5th
Region 5	Sorsogon	Santa Magdalena	5th
Region 6	Aklan	Buruanga	5th
Region 6	Aklan	Lezo	5th
Region 6	Aklan	Tangalan	5th
Region 6	Antique	Belison	5th
Region 6	Antique	Libertad	5th
Region 6	Guimaras	San Lorenzo	5th
Region 6	Iloilo	Batad	5th
Region 6	Iloilo	Bingawan	5th
Region 6	Iloilo	Mina	5th
Region 6	Iloilo	San Rafael	5th
Region 7	Bohol	San Isidro	5th*
Region 7	Bohol	Albuquerque	5th
Region 7	Bohol	Anda	5th
Region 7	Bohol	Batuan	5th
Region 7	Bohol	Clarin	5th
Region 7	Bohol	Corella	5th
Region 7	Bohol	Cortes	5th
Region 7	Bohol	Dagohoy	5th
Region 7	Bohol	Lila	5th
Region 7	Bohol	Loay	5th
Region 7	Bohol	Sevilla	5th
Region 7	Bohol	Sikatuna	5th



ANNEX B

Region	Provinces	Municipalities	Classification
Region 7	Cebu	Ronda	5th*
Region 7	Cebu	Alcantara	5th
Region 7	Cebu	Alcoy	5th
Region 7	Cebu	Boljoon	5th
Region 7	Cebu	Ginatilan	5th
Region 7	Cebu	Malabuyoc	5th
Region 7	Cebu	Pilar	5th
Region 7	Cebu	Samboan	5th
Region 7	Cebu	Tudela	5th
Region 7	Negros Oriental	San Jose	5th
Region 7	Siquijor	E. Villanueva	5th
Region 7	Siquijor	Larena	5th
Region 7	Siquijor	Maria	5th
Region 7	Siquijor	San Juan	5th
Region 8	Biliran	Caibiran	5th*
Region 8	Biliran	Kawayan	5th*
Region 8	Biliran	Almeria	5th
Region 8	Biliran	Biliran	5th
Region 8	Biliran	Cabucgayan	5th
Region 8	Biliran	Culaba	5th
Region 8	Biliran	Maripipi	5th
Region 8	Eastern Samar	Gen. Macarthur	5th*
Region 8	Eastern Samar	Giporlos	5th*
Region 8	Eastern Samar	Lawa-an	5th*
Region 8	Eastern Samar	Maslog	5th*
Region 8	Eastern Samar	Mercedes	5th*
Region 8	Eastern Samar	Salcedo	5th*
Region 8	Eastern Samar	San Policarpio	5th*
Region 8	Eastern Samar	Balangkayan	5th
Region 8	Eastern Samar	Hernani	5th
Region 8	Eastern Samar	Jipapad	5th
Region 8	Eastern Samar	Quinapondan	5th
Region 8	Eastern Samar	San Julian	5th
Region 8	Leyte	Tunga	6th*
Region 8	Leyte	La Paz	5th*
Region 8	Leyte	Mayorga	5th*



Republic of the Philippines
OFFICE OF THE SECRETARY
 Elliptical Road, Diliman
 1100 Quezon City

ANNEX B

Region	Provinces	Municipalities	Classification
Region 8	Leyte	Mc Arthur	5th*
Region 8	Leyte	Pastrana	5th*
Region 8	Leyte	Sta. Fe	5th*
Region 8	Leyte	Hindang	5th
Region 8	Leyte	Julita	5th
Region 8	Leyte	Merida	5th
Region 8	Leyte	Tabon-tabon	5th
Region 8	Leyte	Tolosa	5th
Region 8	Northern Samar	San Vicente	6th
Region 8	Northern Samar	Allen	5th
Region 8	Northern Samar	Biri	5th
Region 8	Northern Samar	Capul	5th
Region 8	Northern Samar	Lapinig	5th
Region 8	Northern Samar	Mapanas	5th
Region 8	Northern Samar	Rosario	5th
Region 8	Northern Samar	San Antonio	5th
Region 8	Northern Samar	San Jose	5th
Region 8	Northern Samar	Victoria	5th
Region 8	Samar	San Sebastian	6th
Region 8	Samar	Talalora	6th
Region 8	Samar	Tagapul-an	5th*
Region 8	Samar	Zumarraga	5th*
Region 8	Samar	Almagro	5th
Region 8	Samar	Jiabong	5th
Region 8	Samar	Marabut	5th
Region 8	Samar	Matuguinao	5th
Region 8	Samar	Pagsanhan	5th
Region 8	Samar	Sto. Niño	5th
Region 8	Southern Leyte	Limasawa	6th*
Region 8	Southern Leyte	Padre Burgos	5th*
Region 8	Southern Leyte	Pintuyan	5th*
Region 8	Southern Leyte	Anahawan	5th
Region 8	Southern Leyte	Hinundayan	5th
Region 8	Southern Leyte	Libagon	5th
Region 8	Southern Leyte	San Francisco	5th
Region 8	Southern Leyte	San Juan	5th



Republic of the Philippines
OFFICE OF THE SECRETARY
 Elliptical Road, Diliman
 1100 Quezon City

ANNEX B

Region	Provinces	Municipalities	Classification
Region 8	Southern Leyte	San Ricardo	5th
Region 8	Southern Leyte	Tomas Oppus	5th
Region 9	Zamboanga Del Norte	La Libertad	5th
Region 9	Zamboanga Del Norte	Mutia	5th
Region 9	Zamboanga Del Norte	Rizal	5th
Region 9	Zamboanga Del Norte	Sibutad	5th
Region 9	Zamboanga Del Sur	Josefina	5th*
Region 9	Zamboanga Del Sur	Sominot	5th*
Region 9	Zamboanga Del Sur	Tigbao	5th*
Region 9	Zamboanga Del Sur	Vincenzo Sagun	5th
Region 9	Zamboanga Sibugay	Talusan	5th
Region 10	Camiguin	Guinsiliban	6th
Region 10	Camiguin	Catarman	5th
Region 10	Camiguin	Mahinog	5th
Region 10	Camiguin	Sagay	5th
Region 10	Lanao Del Norte	Kauswagan	5th
Region 10	Lanao Del Norte	Linamon	5th
Region 10	Lanao Del Norte	Matungao	5th
Region 10	Lanao Del Norte	Pantar	5th
Region 10	Lanao Del Norte	R. Magsaysay	5th
Region 10	Lanao Del Norte	Salvador	5th
Region 10	Lanao Del Norte	Sapad	5th
Region 10	Lanao Del Norte	Tagoloan	5th
Region 10	Lanao Del Norte	Tangkal	5th
Region 10	Misamis Occidental	Concepcion	6th*
Region 10	Misamis Occidental	Sapang Dalaga	5th*
Region 10	Misamis Occidental	Baliangao	5th
Region 10	Misamis Occidental	Panaon	5th
Region 10	Misamis Occidental	Sinacaban	5th
Region 10	Misamis Oriental	Binuangan	6th
Region 10	Misamis Oriental	Balingoan	5th
Region 10	Misamis Oriental	Gitagum	5th
Region 10	Misamis Oriental	Kinoguitan	5th
Region 10	Misamis Oriental	Lagonglong	5th



Region	Provinces	Municipalities	Classification
Region 10	Misamis Oriental	Libertad	5th
Region 10	Misamis Oriental	Sugbong Cogon	5th
Region 11	Davao Del Norte	San Isidro	5th
Region 13	Agusan Del Norte	R. T. Romualdez	5th
Region 13	Dinagat Island	Tubajon	5th*
Region 13	Dinagat Island	Dinagat	5th
Region 13	Dinagat Island	Libjo	5th
Region 13	Surigao Del Norte	Burgos	6th
Region 13	Surigao Del Norte	San Benito	6th
Region 13	Surigao Del Norte	Taganaan	5th*
Region 13	Surigao Del Norte	Alegria	5th
Region 13	Surigao Del Norte	Bacuag	5th
Region 13	Surigao Del Norte	Del Carmen	5th
Region 13	Surigao Del Norte	General Luna	5th
Region 13	Surigao Del Norte	Malimono	5th
Region 13	Surigao Del Norte	Pilar	5th
Region 13	Surigao Del Norte	San Francisco	5th
Region 13	Surigao Del Norte	San Isidro	5th
Region 13	Surigao Del Norte	Santa Monica	5th
Region 13	Surigao Del Norte	Sison	5th
Region 13	Surigao Del Norte	Tubod	5th
Region 13	Surigao Del Sur	Bayabas	5th
Region 13	Surigao Del Sur	Carmen	5th

* not re-classified under Department Order No. 23-08 due to incomplete income data but the classification as stated is taken from the latest re-classification preceding this reclass.

** Not Reclassifiedly-created 16 cities under Joint Resolution No. 29 of the House of Rep., awaiting SC decision, therefore not re-classified as cities under D.O. 23-08. Income Class as stated are the classification as municipalities per DOF Order No. 20-05, dated July 29, 2005 except for Lamitan which was re-classified under D.O. No. 32-01, dated Nov. 20, 2001.

*** Tentative income re-classification as a city under DOF Order No. 23-08, based on average annual regular income for CYs 2004-2007, as a municipality

Not Reclassified Not Reclassifiedly-created municipalities not re-classified since no certified income data



List of SAAD Areas based on Top 3rd Poorest Areas from PSA 2018 data

Region	Province	Municipality	Poverty Incidence	Rank
CAR	Abra	Boliney	33.0	242
CAR	Abra	Lacub	37.7	134
CAR	Abra	Lagayan	32.9	243
CAR	Abra	Tineg	36.4	169
CAR	Apayao	Calanasan (Bayag)	29.8	342
CAR	Apayao	Kabugao	35.3	197
CAR	Benguet	Kibungan	28.1	395
CAR	Ifugao	Asipulo	32.0	275
CAR	Ifugao	Tinoc	27.0	438
CAR	Kalinga	Tinglayan	27.7	411
CAR	Mountain Province	Paracelis	30.6	321
Region 2	Batanes	Itbayat	30.9	309
Region 2	Cagayan	Calayan	42.2	81
Region 2	Cagayan	Peñablanca	27.7	410
Region 2	Cagayan	Rizal	32.2	272
Region 2	Isabela	Dinapigue	44.8	60
Region 2	Isabela	Divilican	47.6	44
Region 2	Isabela	Maconacon	39.0	107
Region 2	Isabela	Palanan	31.3	298
Region 2	Isabela	San Guillermo	27.2	426
Region 2	Nueva Vizcaya	Ambaguio	53.5	20
Region 2	Nueva Vizcaya	Kayapa	29.2	368
Region 4-B	Palawan	Balabac	29.7	344
Region 4-B	Romblon	Cajidiocan	28.7	380
Region 4-B	Romblon	San Fernando	29.3	359
Region 4-B	Romblon	San Jose	27.9	401
Region 4-B	Romblon	Santa Fe	26.5	450
Region 5	Albay	Bacacay	31.5	294
Region 5	Albay	Jovellar	37.5	136
Region 5	Albay	Libon	37.4	140
Region 5	Albay	Malinao	33.7	222
Region 5	Albay	Manito	37.2	148
Region 5	Albay	Oas	34.2	210
Region 5	Albay	Pio Duran	37.5	138
Region 5	Albay	Rapu-Rapu	42.7	74
Region 5	Camarines Norte	Capalonga	38.7	115
Region 5	Camarines Norte	Jose Panganiban	34.5	207
Region 5	Camarines Norte	Mercedes	36.9	157



Region	Province	Municipality	Poverty Incidence	Rank
Region 5	Camarines Norte	Paracale	37.6	135
Region 5	Camarines Norte	San Lorenzo Ruiz	31.6	291
Region 5	Camarines Norte	San Vicente	27.2	425
Region 5	Camarines Norte	Santa Elena	35.8	182
Region 5	Camarines Sur	Balatan	38.4	119
Region 5	Camarines Sur	Bato	30.9	312
Region 5	Camarines Sur	Buhi	29.8	341
Region 5	Camarines Sur	Cabusao	28.1	396
Region 5	Camarines Sur	Calabanga	26.8	443
Region 5	Camarines Sur	Del Gallego	30.6	323
Region 5	Camarines Sur	Garchitorena	41.2	87
Region 5	Camarines Sur	Goa	28.6	384
Region 5	Camarines Sur	Lagonoy	30.1	335
Region 5	Camarines Sur	Libmanan	29.5	352
Region 5	Camarines Sur	Minalabac	32.2	271
Region 5	Camarines Sur	Ocampo	31.0	307
Region 5	Camarines Sur	Pamplona	30.8	313
Region 5	Camarines Sur	Pasacao	32.8	248
Region 5	Camarines Sur	Presentacion	38.0	124
Region 5	Camarines Sur	Ragay	30.4	327
Region 5	Camarines Sur	Sagñay	33.9	217
Region 5	Camarines Sur	San Fernando	28.0	397
Region 5	Camarines Sur	Sipocot	29.1	371
Region 5	Camarines Sur	Siruma	37.8	131
Region 5	Camarines Sur	Tigaon	28.7	381
Region 5	Camarines Sur	Tinambac	36.8	161
Region 5	Catanduanes	Caramoran	34.9	202
Region 5	Catanduanes	Gigmoto	27.1	430
Region 5	Catanduanes	San Miguel	26.7	446
Region 5	Catanduanes	Viga	29.1	374
Region 5	Masbate	Aroroy	37.3	145
Region 5	Masbate	Baleno	33.1	239
Region 5	Masbate	Balud	31.7	283
Region 5	Masbate	Batuan	29.3	360
Region 5	Masbate	Claveria	36.3	172
Region 5	Masbate	Dimasalang	33.9	216
Region 5	Masbate	Esperanza	31.7	287
Region 5	Masbate	Mandaon	32.4	263
Region 5	Masbate	Milagros	36.4	168
Region 5	Masbate	Monreal	39.8	97



Region	Province	Municipality	Poverty Incidence	Rank
Region 5	Masbate	Palanas	30.5	325
Region 5	Masbate	Pio V. Corpuz	29.7	345
Region 5	Masbate	Placer	33.1	235
Region 5	Masbate	San Fernando	27.2	427
Region 5	Masbate	San Jacinto	27.1	432
Region 5	Masbate	San Pascual	38.2	120
Region 5	Masbate	Uson	36.5	167
Region 5	Sorsogon	Barcelona	28.4	389
Region 5	Sorsogon	Bulan	29.5	353
Region 5	Sorsogon	Bulusan	29.0	375
Region 5	Sorsogon	Casiguran	30.6	324
Region 5	Sorsogon	Castilla	35.4	194
Region 5	Sorsogon	Donsol	37.1	151
Region 5	Sorsogon	Gubat	26.4	457
Region 5	Sorsogon	Irosin	32.6	256
Region 5	Sorsogon	Juban	35.7	185
Region 5	Sorsogon	Magallanes	35.9	180
Region 5	Sorsogon	Matnog	37.1	150
Region 5	Sorsogon	Pilar	37.1	152
Region 5	Sorsogon	Prieto Diaz	34.0	214
Region 5	Sorsogon	Santa Magdalena	32.8	247
Region 6	Antique	Caluya	30.3	331
Region 6	Antique	San Remigio	33.1	238
Region 6	Antique	Valderrama	42.6	75
Region 6	Iloilo	Calinog	27.0	435
Region 6	Iloilo	Carles	35.8	183
Region 6	Iloilo	Concepcion	29.2	362
Region 6	Iloilo	San Dionisio	26.7	447
Region 6	Negros Occidental	Calatrava	34.0	215
Region 6	Negros Occidental	Cauayan	27.3	422
Region 6	Negros Occidental	Isabela	28.0	399
Region 6	Negros Occidental	La Castellana	27.0	437
Region 6	Negros Occidental	Moises Padilla (Magallon)	32.3	266
Region 6	Negros Occidental	Salvador Benedicto	32.4	261
Region 7	Bohol	Alicia	27.6	415
Region 7	Bohol	Bien Unido	32.0	276



Republic of the Philippines
OFFICE OF THE SECRETARY
 Elliptical Road, Diliman
 1100 Quezon City

ANNEX B

Region	Province	Municipality	Poverty Incidence	Rank
Region 7	Bohol	Buenavista	32.6	259
Region 7	Bohol	Dagohoy	27.5	416
Region 7	Bohol	Danao	29.2	363
Region 7	Bohol	Getafe	33.9	218
Region 7	Bohol	Mabini	26.9	439
Region 7	Bohol	Pilar	31.3	299
Region 7	Bohol	Pres. Carlos P. Garcia	36.5	165
Region 7	Bohol	San Miguel	27.1	431
Region 7	Bohol	Sierra Bullones	27.3	421
Region 7	Bohol	Talibon	26.5	452
Region 7	Cebu	Badian	26.5	453
Region 7	Cebu	Malabuyoc	27.0	436
Region 7	Cebu	San Francisco	31.7	284
Region 7	Negros Oriental	Ayungon	30.5	326
Region 7	Negros Oriental	Basay	29.1	373
Region 7	Negros Oriental	Bindoy	37.8	130
Region 7	Negros Oriental	Jimalalud	33.3	230
Region 7	Negros Oriental	La Libertad	31.4	296
Region 7	Negros Oriental	Mabinay	32.7	250
Region 7	Negros Oriental	Santa Catalina	28.6	382
Region 7	Negros Oriental	Siaton	30.7	317
Region 7	Negros Oriental	Tayasan	29.2	364
Region 7	Negros Oriental	Vallehermoso	32.3	267
Region 8	Biliran	Cabucgayan	27.9	403
Region 8	Biliran	Caibiran	31.1	303
Region 8	Biliran	Culaba	28.8	378
Region 8	Biliran	Kawayan	27.0	434
Region 8	Eastern Samar	Arteche	58.7	8
Region 8	Eastern Samar	Balangiga	50.1	33
Region 8	Eastern Samar	Balangkayan	50.4	30
Region 8	Eastern Samar	Can-avid	52.2	24
Region 8	Eastern Samar	Dolores	55.3	18
Region 8	Eastern Samar	General MacArthur	58.0	10
Region 8	Eastern Samar	Giporlos	51.6	26
Region 8	Eastern Samar	Guiuan	43.4	71
Region 8	Eastern Samar	Hernani	49.7	35
Region 8	Eastern Samar	Jipapad	65.5	2
Region 8	Eastern Samar	Lawaan	46.6	49
Region 8	Eastern Samar	Llorente	51.8	25



Region	Province	Municipality	Poverty Incidence	Rank
Region 8	Eastern Samar	Maslog	73.4	1
Region 8	Eastern Samar	Maydolong	46.4	51
Region 8	Eastern Samar	Mercedes	37.9	125
Region 8	Eastern Samar	Oras	55.2	19
Region 8	Eastern Samar	Quinapondan	51.3	29
Region 8	Eastern Samar	Salcedo	44.9	59
Region 8	Eastern Samar	San Julian	48.4	40
Region 8	Eastern Samar	San Policarpo	55.8	15
Region 8	Eastern Samar	Sulat	45.6	56
Region 8	Eastern Samar	Taft	47.6	43
Region 8	Leyte	Abuyog	28.2	392
Region 8	Leyte	Alangalang	31.1	306
Region 8	Leyte	Albuera	27.2	428
Region 8	Leyte	Babatngon	33.1	236
Region 8	Leyte	Barugo	26.5	455
Region 8	Leyte	Bato	29.2	369
Region 8	Leyte	Burauen	27.8	405
Region 8	Leyte	Calubian	29.4	357
Region 8	Leyte	Capoocan	32.9	244
Region 8	Leyte	Dagami	33.7	221
Region 8	Leyte	Jaro	31.6	292
Region 8	Leyte	Javier (Bugho)	30.7	318
Region 8	Leyte	Julita	28.4	388
Region 8	Leyte	Kananga	31.1	305
Region 8	Leyte	La Paz	31.6	288
Region 8	Leyte	Leyte	36.9	155
Region 8	Leyte	MacArthur	29.6	348
Region 8	Leyte	Mahaplag	31.9	281
Region 8	Leyte	Matag-ob	29.2	366
Region 8	Leyte	Matalom	26.5	451
Region 8	Leyte	Mayorga	29.6	351
Region 8	Leyte	Pastrana	28.5	385
Region 8	Leyte	San Isidro	32.7	251
Region 8	Leyte	San Miguel	33.2	231
Region 8	Leyte	Santa Fe	27.9	402
Region 8	Leyte	Tabango	30.8	314
Region 8	Leyte	Tabontabon	30.6	322
Region 8	Northern Samar	Biri	41.8	84
Region 8	Northern Samar	Bobon	34.6	205
Region 8	Northern Samar	Capul	37.4	142



Region	Province	Municipality	Poverty Incidence	Rank
Region 8	Northern Samar	Catarman	30.3	332
Region 8	Northern Samar	Catubig	44.1	66
Region 8	Northern Samar	Gamay	33.5	227
Region 8	Northern Samar	Laoang	39.8	96
Region 8	Northern Samar	Lapinig	37.7	133
Region 8	Northern Samar	Las Navas	50.1	31
Region 8	Northern Samar	Lavezares	34.1	212
Region 8	Northern Samar	Lope De Vega	47.9	42
Region 8	Northern Samar	Mapanas	42.5	76
Region 8	Northern Samar	Mondragon	39.5	101
Region 8	Northern Samar	Palapag	40.0	93
Region 8	Northern Samar	Pambujan	44.7	61
Region 8	Northern Samar	Rosario	33.0	241
Region 8	Northern Samar	San Antonio	26.8	441
Region 8	Northern Samar	San Isidro	32.6	260
Region 8	Northern Samar	San Jose	32.1	273
Region 8	Northern Samar	San Roque	44.1	67
Region 8	Northern Samar	San Vicente	37.3	143
Region 8	Northern Samar	Silvino Lobos	56.9	12
Region 8	Northern Samar	Victoria	33.6	225
Region 8	Samar (Western)	Almagro	30.3	333
Region 8	Samar (Western)	Basey	26.9	440
Region 8	Samar (Western)	Daram	41.2	86
Region 8	Samar (Western)	Gandara	31.3	297
Region 8	Samar (Western)	Hinabangan	28.3	390
Region 8	Samar (Western)	Marabut	27.4	419
Region 8	Samar (Western)	Matuguinao	39.8	98
Region 8	Samar (Western)	Motiong	30.9	311
Region 8	Samar (Western)	Pagsanghan	29.2	367
Region 8	Samar (Western)	Paranas (Wright)	26.4	456
Region 8	Samar (Western)	Pinabacdao	30.4	328
Region 8	Samar (Western)	San Jorge	29.6	349



Region	Province	Municipality	Poverty Incidence	Rank
Region 8	Samar (Western)	San Jose de Buan	38.8	113
Region 8	Samar (Western)	San Sebastian	27.8	407
Region 8	Samar (Western)	Santa Rita	34.4	208
Region 8	Samar (Western)	Santo Niño	30.7	319
Region 8	Samar (Western)	Tagapul-an	31.6	290
Region 8	Samar (Western)	Talalora	37.2	149
Region 8	Samar (Western)	Tarangnan	29.9	338
Region 8	Samar (Western)	Villareal	32.6	257
Region 8	Samar (Western)	Zumarraga	38.9	109
Region 8	Southern Leyte	Bontoc	29.7	346
Region 8	Southern Leyte	Lihagon	28.1	393
Region 8	Southern Leyte	Liloan	29.3	358
Region 8	Southern Leyte	Malitbog	29.8	339
Region 8	Southern Leyte	Pintuyan	27.3	423
Region 8	Southern Leyte	San Francisco	27.5	418
Region 8	Southern Leyte	San Ricardo	30.6	320
Region 8	Southern Leyte	Silago	26.8	444
Region 8	Southern Leyte	Sogod	27.2	424
Region 8	Southern Leyte	Tomas Oppus	26.5	454
Region 9	Zamboanga del Norte	Bacungan (Leon T. Postigo)	55.8	16
Region 9	Zamboanga del Norte	Baliguian	52.6	23
Region 9	Zamboanga del Norte	Godod	59.3	6
Region 9	Zamboanga del Norte	Gutalac	59.7	5
Region 9	Zamboanga del Norte	Jose Dalman (Ponot)	56.5	13
Region 9	Zamboanga del Norte	Kalawit	56.5	14
Region 9	Zamboanga del Norte	Katipunan	52.9	22
Region 9	Zamboanga del Norte	La Libertad	53.0	21



Region	Province	Municipality	Poverty Incidence	Rank
Region 9	Zamboanga del Norte	Labason	45.2	58
Region 9	Zamboanga del Norte	Liloy	44.4	62
Region 9	Zamboanga del Norte	Manukan	49.2	39
Region 9	Zamboanga del Norte	Mutia	46.8	48
Region 9	Zamboanga del Norte	Piñan	46.5	50
Region 9	Zamboanga del Norte	Polanco	42.4	78
Region 9	Zamboanga del Norte	Pres. Manuel A. Roxas	55.6	17
Region 9	Zamboanga del Norte	Rizal	39.5	100
Region 9	Zamboanga del Norte	Salug	49.4	37
Region 9	Zamboanga del Norte	Sergio Osmeña Sr.	59.2	7
Region 9	Zamboanga del Norte	Siayan	62.0	3
Region 9	Zamboanga del Norte	Sibuco	58.6	9
Region 9	Zamboanga del Norte	Sibutad	46.3	52
Region 9	Zamboanga del Norte	Sindangan	37.1	153
Region 9	Zamboanga del Norte	Siocon	51.4	28
Region 9	Zamboanga del Norte	Sirawai	57.6	11
Region 9	Zamboanga del Norte	Tampilisan	48.2	41
Region 9	Zamboanga del Sur	Aurora	29.8	343
Region 9	Zamboanga del Sur	Bayog	37.9	128
Region 9	Zamboanga del Sur	Dimataling	36.6	164
Region 9	Zamboanga del Sur	Dinas	36.8	159
Region 9	Zamboanga del Sur	Dumalinao	32.8	245
Region 9	Zamboanga del Sur	Dumingag	39.8	99



Region	Province	Municipality	Poverty Incidence	Rank
Region 9	Zamboanga del Sur	Guipos	31.6	289
Region 9	Zamboanga del Sur	Josefina	28.1	394
Region 9	Zamboanga del Sur	Kumalarang	37.7	132
Region 9	Zamboanga del Sur	Labangan	32.4	262
Region 9	Zamboanga del Sur	Lakewood	39.1	106
Region 9	Zamboanga del Sur	Lapuyan	41.0	88
Region 9	Zamboanga del Sur	Mahayag	35.4	195
Region 9	Zamboanga del Sur	Margosatubig	32.3	268
Region 9	Zamboanga del Sur	Midsalip	45.3	57
Region 9	Zamboanga del Sur	Pitogo	36.9	156
Region 9	Zamboanga del Sur	Ramon Magsaysay	32.6	258
Region 9	Zamboanga del Sur	San Miguel	32.7	249
Region 9	Zamboanga del Sur	San Pablo	38.8	111
Region 9	Zamboanga del Sur	Sominot	38.4	118
Region 9	Zamboanga del Sur	Tabina	37.9	127
Region 9	Zamboanga del Sur	Tambulig	32.3	264
Region 9	Zamboanga del Sur	Tigbao	39.5	102
Region 9	Zamboanga del Sur	Tukuran	33.4	229
Region 9	Zamboanga del Sur	Vincenzo A. Sagun	30.8	315
Region 9	Zamboanga Sibugay	Alicia	37.3	144
Region 9	Zamboanga Sibugay	Diplahan	28.9	376
Region 9	Zamboanga Sibugay	Imelda	29.3	361
Region 9	Zamboanga Sibugay	Kabasalan	30.1	334
Region 9	Zamboanga Sibugay	Mabuhay	42.9	73



Region	Province	Municipality	Poverty Incidence	Rank
Region 9	Zamboanga Sibugay	Malangas	30.8	316
Region 9	Zamboanga Sibugay	Naga	32.8	246
Region 9	Zamboanga Sibugay	Olutanga	36.6	163
Region 9	Zamboanga Sibugay	Payao	38.8	110
Region 9	Zamboanga Sibugay	Roseller Lim	32.3	269
Region 9	Zamboanga Sibugay	Siay	33.0	240
Region 9	Zamboanga Sibugay	Talusan	42.3	79
Region 9	Zamboanga Sibugay	Titay	33.5	226
Region 9	Zamboanga Sibugay	Tungawan	36.3	175
Region 10	Bukidnon	Baungon	34.7	204
Region 10	Bukidnon	Cabanglasan	34.0	213
Region 10	Bukidnon	Damulog	35.4	191
Region 10	Bukidnon	Dangcagan	27.6	413
Region 10	Bukidnon	Don Carlos	27.1	433
Region 10	Bukidnon	Impasug-ong	33.8	220
Region 10	Bukidnon	Kadingilan	33.6	224
Region 10	Bukidnon	Kalilangan	31.9	279
Region 10	Bukidnon	Kibawe	28.5	386
Region 10	Bukidnon	Kitaotao	35.6	187
Region 10	Bukidnon	Lantapan	33.9	219
Region 10	Bukidnon	Libona	27.7	409
Region 10	Bukidnon	Malitbog	35.6	188
Region 10	Bukidnon	Pangantucan	31.7	285
Region 10	Bukidnon	Quezon	29.8	340
Region 10	Bukidnon	San Fernando	36.3	174
Region 10	Bukidnon	Sumilao	32.3	270
Region 10	Bukidnon	Talakag	43.4	70
Region 10	Camiguin	Catarman	26.6	449
Region 10	Camiguin	Guinsiliban	30.4	329
Region 10	Camiguin	Sagay	32.7	252
Region 10	Lanao del Norte	Baloi	29.1	370
Region 10	Lanao del Norte	Magsaysay	31.9	280
Region 10	Lanao del Norte	Matungao	41.0	89
Region 10	Lanao del Norte	Munai	36.3	171



Region	Province	Municipality	Poverty Incidence	Rank
Region 10	Lanao del Norte	Nunungan	44.2	65
Region 10	Lanao del Norte	Pantao Ragat	42.5	77
Region 10	Lanao del Norte	Pantar	36.7	162
Region 10	Lanao del Norte	Poona Piagapo	51.4	27
Region 10	Lanao del Norte	Salvador	29.1	372
Region 10	Lanao del Norte	Sultan Naga Dimaporo	27.7	412
Region 10	Lanao del Norte	Tagoloan	36.5	166
Region 10	Lanao del Norte	Tangcal	44.1	68
Region 10	Misamis Occidental	Baliangao	26.8	445
Region 10	Misamis Occidental	Bonifacio	35.0	201
Region 10	Misamis Occidental	Concepcion	49.9	34
Region 10	Misamis Occidental	Don Victoriano Chiongbian	35.7	184
Region 10	Misamis Occidental	Lopez Jaena	28.2	391
Region 10	Misamis Occidental	Sapang Dalaga	35.4	196
Region 11	Davao de Oro	Monkayo	28.0	398
Region 11	Davao de Oro	Montevista	27.9	404
Region 11	Davao de Oro	Pantukan	27.8	406
Region 11	Davao del Norte	Talaingod	49.6	36
Region 11	Davao del Sur	Kiblawan	29.9	337
Region 11	Davao Occidental	Don Marcelino	37.9	126
Region 11	Davao Occidental	Jose Abad Santos (Trinidad)	47.2	46
Region 11	Davao Occidental	Malita	35.8	181
Region 11	Davao Occidental	Santa Maria	31.7	286
Region 11	Davao Occidental	Sarangani	35.5	190
Region 11	Davao Oriental	Baganga	36.4	170
Region 11	Davao Oriental	Boston	29.5	355
Region 11	Davao Oriental	Caraga	40.0	92
Region 11	Davao Oriental	Cateel	32.7	253
Region 11	Davao Oriental	Governor Generoso	35.1	200
Region 11	Davao Oriental	Manay	37.1	154
Region 11	Davao Oriental	San Isidro	31.2	302



Region	Province	Municipality	Poverty Incidence	Rank
Region 11	Davao Oriental	Tarragona	38.2	121
Region 12	North Cotabato	Alamada	44.3	64
Region 12	North Cotabato	Aleosan	47.1	47
Region 12	North Cotabato	Antipas	28.6	383
Region 12	North Cotabato	Arakan	42.1	82
Region 12	North Cotabato	Banisilan	43.0	72
Region 12	North Cotabato	Carmen	39.3	103
Region 12	North Cotabato	Magpet	41.7	85
Region 12	North Cotabato	Matalam	35.9	179
Region 12	North Cotabato	Pigkawayan	33.2	233
Region 12	North Cotabato	Pikit	44.0	69
Region 12	North Cotabato	President Roxas	37.5	137
Region 12	North Cotabato	Tulunan	35.4	193
Region 12	Sarangani	Alabel	29.2	365
Region 12	Sarangani	Glan	39.3	104
Region 12	Sarangani	Kiamba	33.4	228
Region 12	Sarangani	Maasim	41.9	83
Region 12	Sarangani	Maitum	38.6	116
Region 12	Sarangani	Malapatan	45.7	54
Region 12	Sarangani	Malungon	34.2	211
Region 12	South Cotabato	Lake Sebu	49.3	38
Region 12	South Cotabato	Tampakan	30.9	310
Region 12	South Cotabato	Tantangan	26.8	442
Region 12	South Cotabato	T'boli	45.7	53
Region 12	Sultan Kudarat	Bagumbayan	33.1	237
Region 12	Sultan Kudarat	Columbio	36.2	177
Region 12	Sultan Kudarat	Esperanza	27.5	417
Region 12	Sultan Kudarat	Kalamansig	42.2	80
Region 12	Sultan Kudarat	Lambayong	34.6	206
Region 12	Sultan Kudarat	Lebak	34.7	203
Region 12	Sultan Kudarat	Lutayan	39.9	94
Region 12	Sultan Kudarat	Palimbang	60.5	4
Region 12	Sultan Kudarat	President Quirino	26.7	448
Region 12	Sultan Kudarat	Sen. Ninoy Aquino	38.2	122
Region 13	Agusan del Norte	Carmen	27.2	429
Region 13	Agusan del Norte	Jabonga	31.3	300
Region 13	Agusan del Norte	Las Nieves	37.2	146



Region	Province	Municipality	Poverty Incidence	Rank
Region 13	Agusan del Norte	Remedios T. Romualdez	27.7	408
Region 13	Agusan del Norte	Santiago	28.7	379
Region 13	Agusan del Norte	Tubay	28.8	377
Region 13	Agusan del Sur	Bunawan	30.3	330
Region 13	Agusan del Sur	Esperanza	45.7	55
Region 13	Agusan del Sur	La Paz	50.1	32
Region 13	Agusan del Sur	Loreto	44.4	63
Region 13	Agusan del Sur	Prosperidad	34.2	209
Region 13	Agusan del Sur	Rosario	35.4	192
Region 13	Agusan del Sur	San Luis	47.3	45
Region 13	Agusan del Sur	Santa Josefa	31.0	308
Region 13	Agusan del Sur	Sibagat	40.2	91
Region 13	Agusan del Sur	Talacogon	36.2	178
Region 13	Agusan del Sur	Trento	29.6	350
Region 13	Agusan del Sur	Veruela	39.9	95
Region 13	Dinagat Islands	Basilisa (Rizal)	33.2	232
Region 13	Dinagat Islands	Cagdianao	36.8	158
Region 13	Dinagat Islands	Dinagat	35.3	198
Region 13	Dinagat Islands	Libjo (Albor)	38.5	117
Region 13	Dinagat Islands	Loreto	31.5	295
Region 13	Dinagat Islands	San Jose	27.6	414
Region 13	Dinagat Islands	Tubajon	35.7	186
Region 13	Surigao del Norte	Alegria	37.4	141
Region 13	Surigao del Norte	Bacuag	31.8	282
Region 13	Surigao del Norte	Burgos	31.6	293
Region 13	Surigao del Norte	Claver	32.3	265
Region 13	Surigao del Norte	Dapa	38.1	123
Region 13	Surigao del Norte	Del Carmen	35.5	189
Region 13	Surigao del Norte	General Luna	40.7	90
Region 13	Surigao del Norte	Gigaquit	39.2	105
Region 13	Surigao del Norte	Mainit	39.0	108



Region	Province	Municipality	Poverty Incidence	Rank
Region 13	Surigao del Norte	Malimono	35.2	199
Region 13	Surigao del Norte	Pilar	37.4	139
Region 13	Surigao del Norte	Placer	32.7	255
Region 13	Surigao del Norte	San Benito	38.7	114
Region 13	Surigao del Norte	San Francisco (Anao-Aon)	32.1	274
Region 13	Surigao del Norte	San Isidro	36.8	160
Region 13	Surigao del Norte	Santa Monica (Sapao)	33.7	223
Region 13	Surigao del Norte	Sison	36.2	176
Region 13	Surigao del Norte	Socorro	32.0	277
Region 13	Surigao del Norte	Tagana-an	37.2	147
Region 13	Surigao del Norte	Tubod	29.4	356
Region 13	Surigao del Sur	Barobo	33.2	234
Region 13	Surigao del Sur	Bayabas	31.1	304
Region 13	Surigao del Sur	Cagwait	28.0	400
Region 13	Surigao del Sur	Carmen	27.3	420
Region 13	Surigao del Sur	Cortes	28.4	387
Region 13	Surigao del Sur	Hinatuan	31.3	301
Region 13	Surigao del Sur	Lanuza	29.5	354
Region 13	Surigao del Sur	Lianga	30.0	336
Region 13	Surigao del Sur	Lingig	36.3	173
Region 13	Surigao del Sur	Marihatag	37.8	129
Region 13	Surigao del Sur	San Agustin	32.0	278
Region 13	Surigao del Sur	San Miguel	38.8	112
Region 13	Surigao del Sur	Tagbina	32.7	254
Region 13	Surigao del Sur	Tago	29.7	347